

QUANTUM
EVENTS TECHNOLOGY


PALACE
MEETINGS AND INCENTIVES

J A M A I C A


MOON PALACE®
JAMAICA

CASE STUDIES





PALACE RESORTS

From ideation and planning to implementation, our team worked with multiple Palace Resorts departments to bring to life its annual conference with more than 600 attendees.





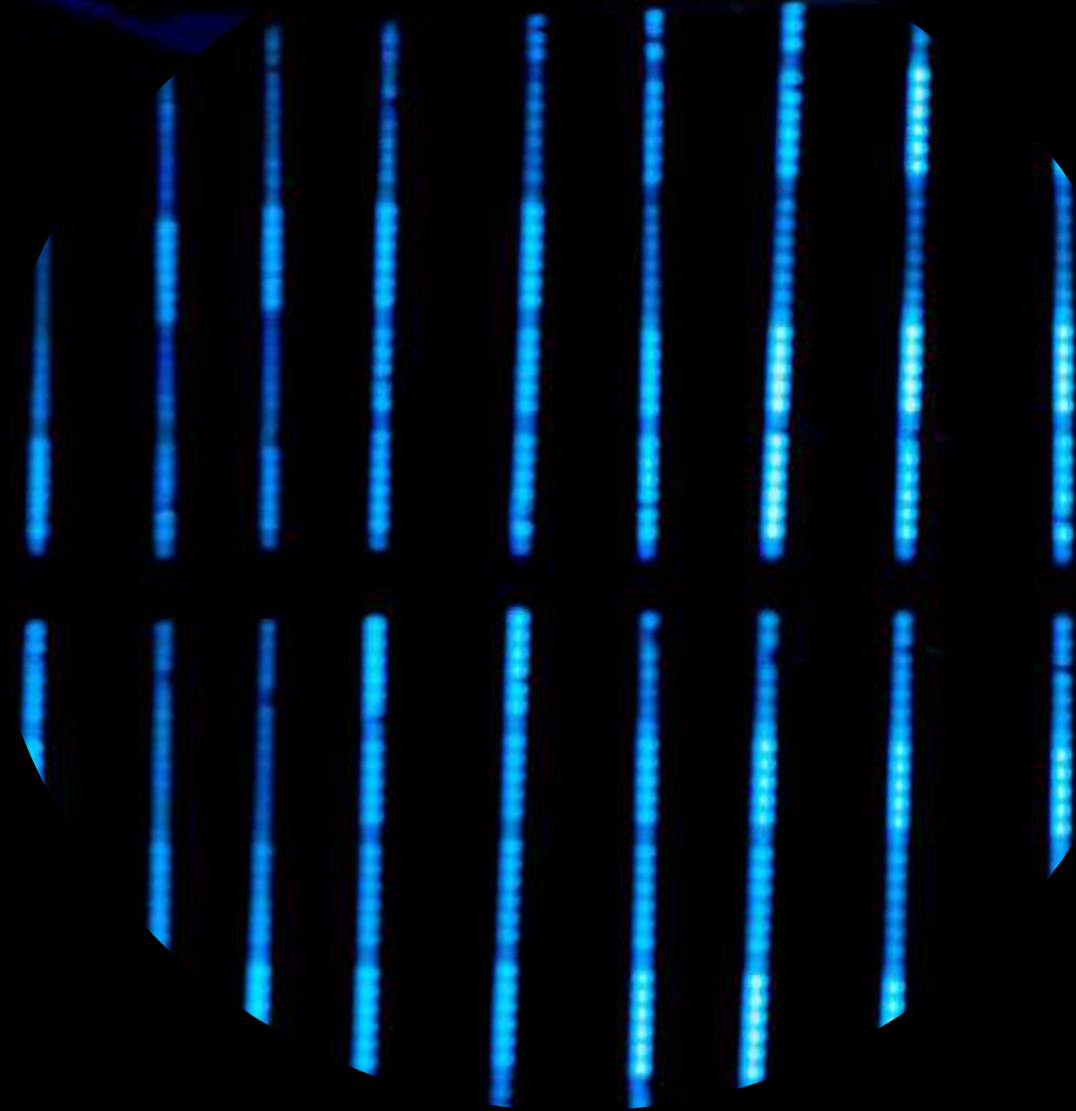


GENERAL SESSION

- Took place in sections D & E of Moon Palace Arena
- Welcome kits delivered to all participants.
- 30' x 45' projection surface with a circular center 12' in diameter.
- Image mapping using 4 Panasonic laser projectors with 20,000 lumens.
- Playback Pro.
- Use of Watchout server.
- 15 front-of-house workstations for video staff, audio, and lighting.
- Rigging system with 66 Tomcat light duty truss, 10 Tyler center line truss, 16 Tomcat Ladder truss and 40 half-ton stage maker chain hoist.
- CCTV to 3 Full HD cameras.
- KLA12 Series QSC audio system with 2 clusters on both sides of the stage with 5 boxes on, 8 QSC KLA181 series subwoofers, 10 QSC K12.2 series floor monitors, Yamaha CL5 for FOH. Audio system for 2,000 sq m (21,290 sq ft.)
- Special microphone for speakers' participation.
- 16 Robe Pointe, 1 DTS Pharus, 50 PAR-LED Color Blender, 20 ETC-LED Leko 26° and 36°



CONVENCION
2019
CONFERENCE





OUTDOOR EVENTS

- Beach and terrace events.
- Projection on outdoor canvas.
- Video, audio, and lighting control.
- Tomcat light duty truss rigging system in a rigging system (box-type).
- IMAG with two full HD cameras.
- Audio system for 1,000 pax.
- Instrument System (backline) live band, DJs, VJs, and wired and wireless microphones.
- Different types of lighting as Robe Pointe, DTS Pharus, fog machine, laser lighting, PAR-LED color mixers, LED Leko 26° and 36°
- Outdoor electrical connections made with diesel power generators.



AUDIO





QSC SERIES K 12.2

The QSC K.2 Series™ represents the best-in-class loudspeaker for today's demanding audio professionals. The perfect combination of elegant design, superior audio performance, high functionality, simple and intuitive operation, and genuine QSC reliability, K.2 delivers extraordinary results for users in both portable and installed applications.

QSC SERIE K8.2

The QSC K.2 Series™ represents the best-in-class loudspeaker for today's demanding audio professionals. The perfect combination of elegant design, superior audio performance, high functionality, simple and intuitive operation, and genuine QSC reliability, K.2 delivers extraordinary results for users in both portable and installed applications.





QSC SUBWOOFER KS112

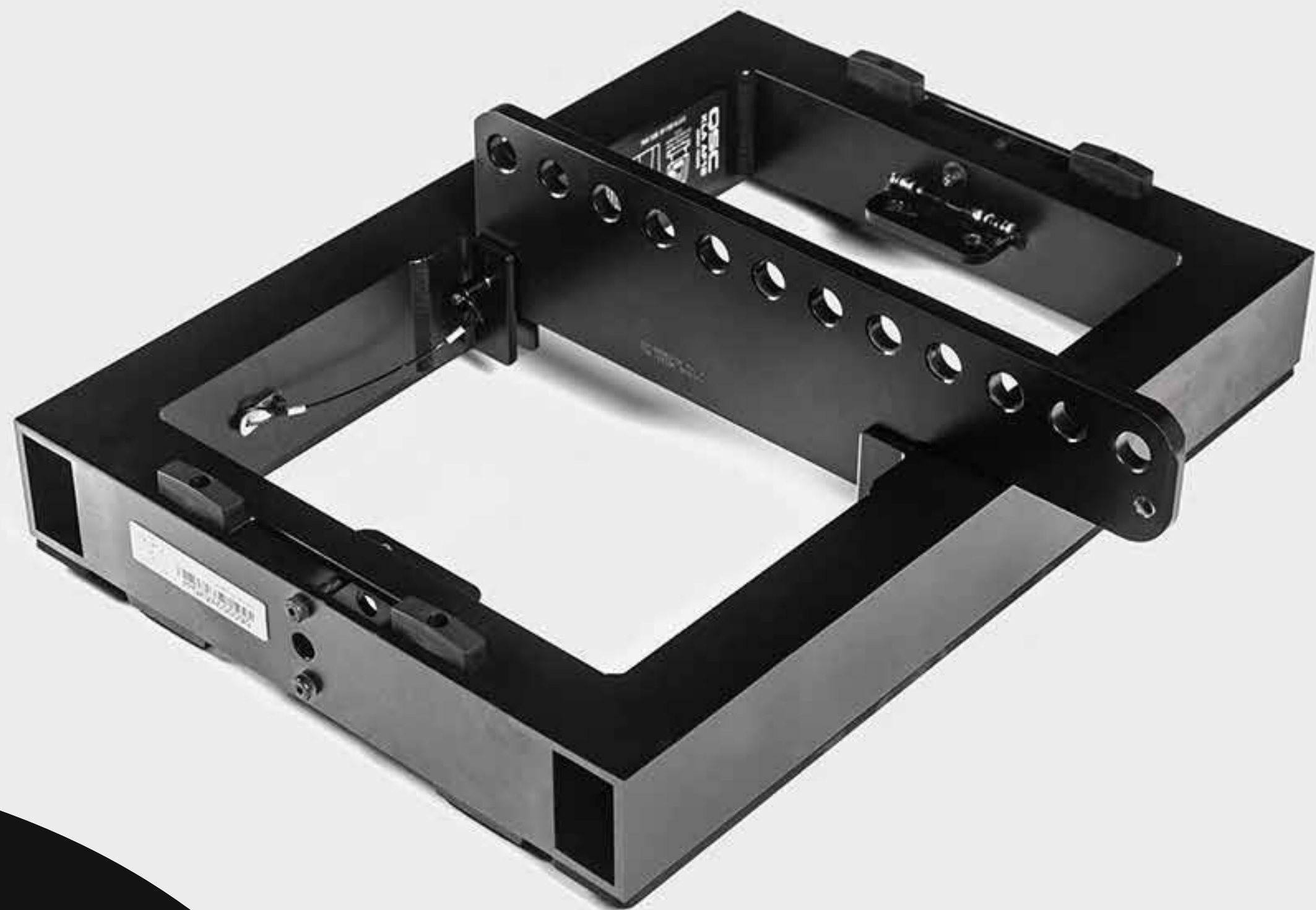
The KS112 is an ultra-compact active subwoofer for installation and highly portable entertainment applications. The KS112 is a single 12-inch bandpass design subwoofer, powered by a 2000 Watt peak power Class D amplifier module. The cabinet is constructed of premium birch and includes high-quality, low noise casters. Two M20 threaded pole receptacles are available for a positive, wobble-free connection to a threaded speaker pole in either vertical or horizontal deployment.



QSC KLA 12-BK. LINE ARRAY

This waveguide design is based upon similar principles found on our patented WideLine™ Series waveguides and the waveguides found on our K Series products. Designed to be used exclusively as a fixed arcuate line array, each KLA12 is configured for a 90° x 18° coverage angle, allowing 90° vertical arrays to be configured using only five boxes (most other solutions require six). KLA's unique self-contained SOLO™ (Single-Operator Logistics) Rigging System enables users to quickly assemble (and disassemble) the line array in a fraction of the time without the need for special tools or external hardware. KLA12's Ar-Q™ (Arcuate Equalization) processing enables users to quickly tune and configure the array, making appropriate frequency adjustments based on the number of boxes. With the click of a dial, the user can select the total number of boxes deployed in the array.





QSC BUMPER/ FLY ARRAY AF 12

This rugged KLA AF12 aluminum line-array frame by QSC is specifically designed for the KLA series by QSC. It can carry up to five KLA12 and two KLA181 speakers, making it the perfect accessory for your KLA series speakers. It weighs just 10.4 kilograms and has a load capacity of up to 218 kilograms!

QSC SUBWOOFER KLA 181

In addition to DEEP™ DSP algorithm, GuardRail™, Auto Standby, balanced line-level XLR input with an XLR “Thru” connector, Attenuation Control and LED indicators, the KLA181 subwoofer also includes a polarity switch.







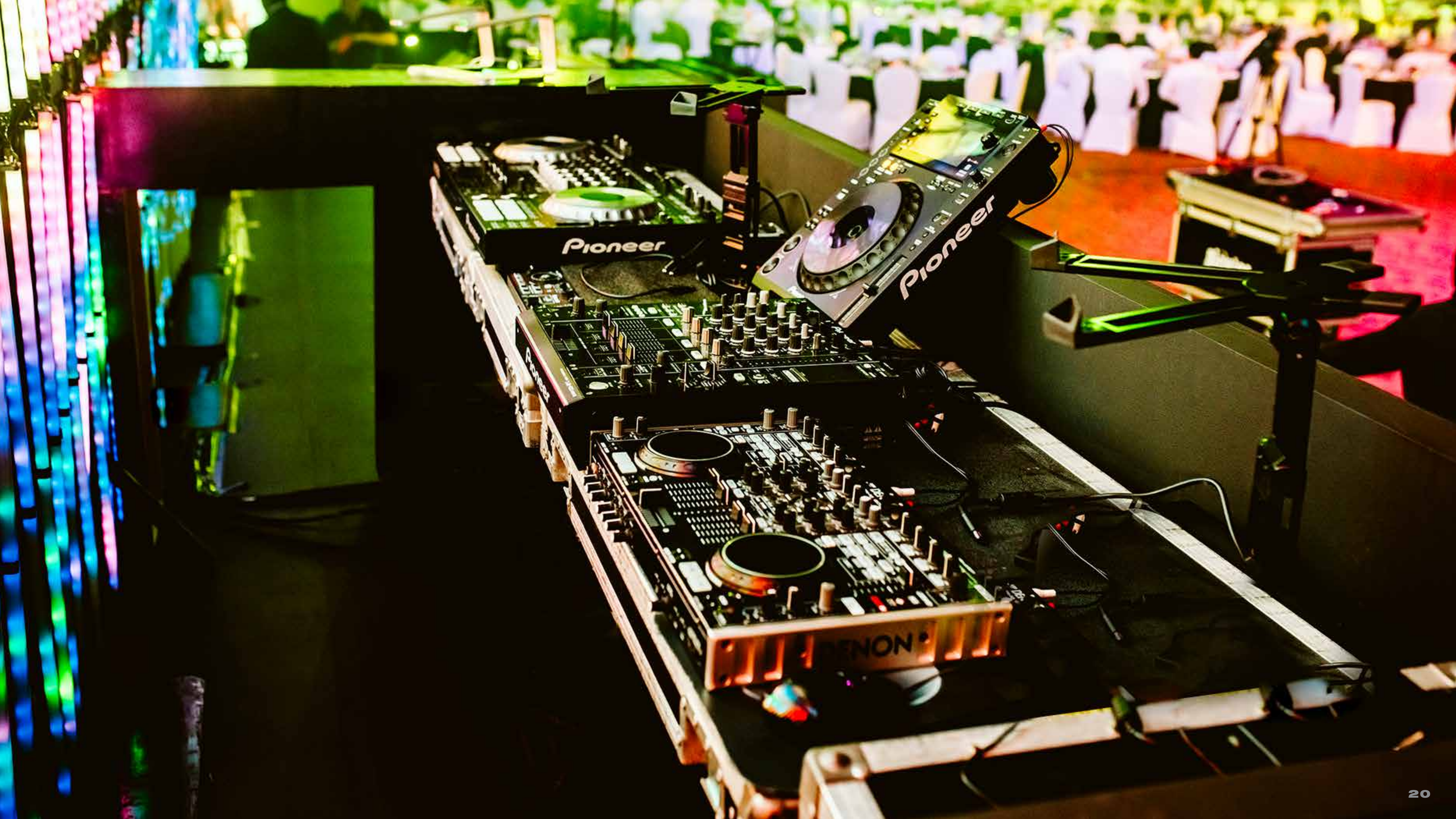
SOUNDCRAFT SI PERFORMER 3

Drawing on the combined heritage of legendary Soundcraft quality and the powerful and intuitive Vi Series digital live sound mixers, the Si Performer brings unparalleled mix power and performance to small format digital live sound mixers. Sitting where a plethora of gear once was, the Si Performer delivers the equivalent of 448 rack units of DSP including sophisticated 4-band fully parametric EQ, full dynamics processing, a comprehensive range of output options, totally flexible routing and, as with all Soundcraft consoles, an unmatched range of options to fully integrate the Si Performer into an existing system or become the center of a thriving new installation.

STAGEBOX MINI 32 CH

The new Mini Stagebox range from Harman's Soundcraft provides a simple solution to stage connectivity offering a lower-cost option for many systems where the modularity and configurability of the larger systems are not required. The Mini Stagebox 32R (3U) provides 32 analogue inputs and 8 analogue line outputs, with 4 pairs of AES outputs, providing a total I/O capacity of 32 inputs and 16 outputs, with the Mini Stagebox 16R (2U) model providing 16 analogue inputs and 8 line outputs making a 16 x 8 matrix. They connect to any of the Soundcraft Si Expression, Si Compact, Si Performer, Si Series and Vi Series consoles via a MADl card fitted to the option card slot.







ALLEN & HEATH ZED-428

ZED-428 is excellent for bands, theatres or AV applications. It has a truly professional feature set, which will fit any sound reinforcement application or professional PA hire stock. ZED-428 has configurable USB audio in/out, making it easy to capture stereo recordings, plus 24 mic/line inputs, 2 dual stereo inputs, 4-band EQ with MusiQ, 4 sub-groups, 6 auxiliary sends and a 7 x 2 matrix.

ALLEN & HEATH ZEDI-10FX

Offers the best of both worlds, incorporating a out 24 bit/96Khz USB audio interface for hassle-free multitrack recording and playback to/from a Mac or PC, or to an Ios device using the Ios camera kit. The USB output source can be set up in several different ways to MATCH your workflow.





SHURE QLX-D RECEIVER G50 COMBO HH/LAV

System Overview. QLX-D® Digital Wireless delivers defined, streamlined performance with transparent 24-bit digital audio. Combining professional features with simplified setup and operation, QLX-D offers outstanding wireless functionality for demanding live sound events and installations. With clearly defined performance and innovation, QLX-D delivers the very latest in digital wireless technology from Shure.

MIC PODIUM SHURE MX418

The Gooseneck Microphones Shure MX418 give new meaning to the word flexible. In addition to its fully adaptable goosenecks, there is a new level of flexibility: the Microflex interchangeable condenser capsule. Designed to change it easily, and available in cardioid, supercardioid and omnidirectional polar patterns, the interchangeable capsules offer a wide frequency response and accurate sound reproduction for a wide variety of applications, such as temples, courts and conference centers.





SHURE SM58

The Shure SM58® is a dynamic unidirectional (cardioid) vocal microphone, designed for professional vocal use in live performances, and studio recordings. A highly efficient built-in spherical filter significantly reduces wind and breath noise. A cardioid polar pattern to the main sound source and at the same time rejects unwanted background noise.





SHURE SM57

The Shure SM57 unidirectional dynamic microphone is exceptional for musical instrument pickup or for vocals. With its bright, clean sound and carefully contoured presence rise, the SM57 is ideal for live sound reinforcement and recording. It has an extremely effective cardioid pickup pattern which isolates the main sound source while minimizing background noise. In the studio, it is excellent for recording drums, guitar, and woodwinds. For musical instruments or vocals, the SM57 is a consistent choice of professional performers.

KSM32/SL

The champagne KSM32/SL Studio Condenser Microphone from Shure is a side-address, cardioid condenser microphone for highly critical studio recording and live sound productions. It offers an extended frequency response for an open, natural sounding reproduction of the original sound source. A 15 dB attenuation switch allows the KSM32 to handle the high sound pressure levels associated with drums, percussion, and ensembles.





BETA 52

The Shure BETA 52 is a high output dynamic microphone with a tailored frequency response designed specifically for kick drums and other bass instruments. It provides superb attack and “punch,” and delivers studio quality sound even at extremely high sound pressure levels. The BETA 52 features a modified supercardioid pattern throughout its frequency range to insure high gain before feedback and excellent rejection of unwanted sound. A built-in dynamic locking stand adapter with an integral XLR connector simplifies installation, particularly if the microphone is to be placed inside a kick drum. The stand adapter keeps the microphone position fixed and resists slipping, even when subjected to sharp blows and strong vibrations. A hardened steel mesh grille protects the B.





BETA 98AD/C

Instrument microphone delivers a smooth and natural response, and consists of an A98D drum mount for secure placement in any configuration and a uniform cardioid polar pattern for excellent gain-before-feedback and off-axis noise rejection.





COUNTRYMAN SHURE WCE6iT

The WCE6iT Contryman Microphone is sturdy, flexible and incredibly light. The silicone padding on the earpiece helps keep the earphones snugly in place, even with glasses or other head accessories. Offering a range of colors to match virtually any skin tone, the WCE6iT's most flexible pole is very easy to adjust and perfect when a headset is shared between multiple people

CLEAR-COM CZ-BS410

The Clear-Com CZ-BS410 is the base station for the DX410 wireless system, supporting up to 15 registered BP410 beltbacks and/or WH410 all-in-one wireless headsets. The system operates in the 2.4GHz frequency band and features high quality 7kHz wideband audio.

HEAD SET CC-15-MD4

Clear-Com's CZ11450 is a CC-15-MD4 single-ear headset with noise-cancelling electret microphone and Mini-DIN connector for use with the Clear-Com DX Series wireless intercom systems (sold separately). This model uses an Electret microphone, with Mini DIN connector. The headset includes an enclosed ear phone and leatherette ear pads while also offering the ability of 360-degree rotation with the mic boom for left or right side use.

CLEAR-COM BP410

The BP410 is a rugged, light-weight, ergonomically designed beltback to be used with the BS410 base station. Single-channel operation allows any four beltback and/or all-in-one wireless headset uses to engage in simultaneous, full-duplex communication. In dual-channel operation, three users may be in full-duplex with up to 13 additional users in listen-only mode. The BP410 has a rugged, over-mold, reinforced casing and long-lasting keypads with no mechanical switch. Using the BAT50 Li-Ion battery, the BP410 has up to 12 hours of battery life.

1 CLEARCOM CZ-BS410.

5 HEAD SET CC-15-MD4

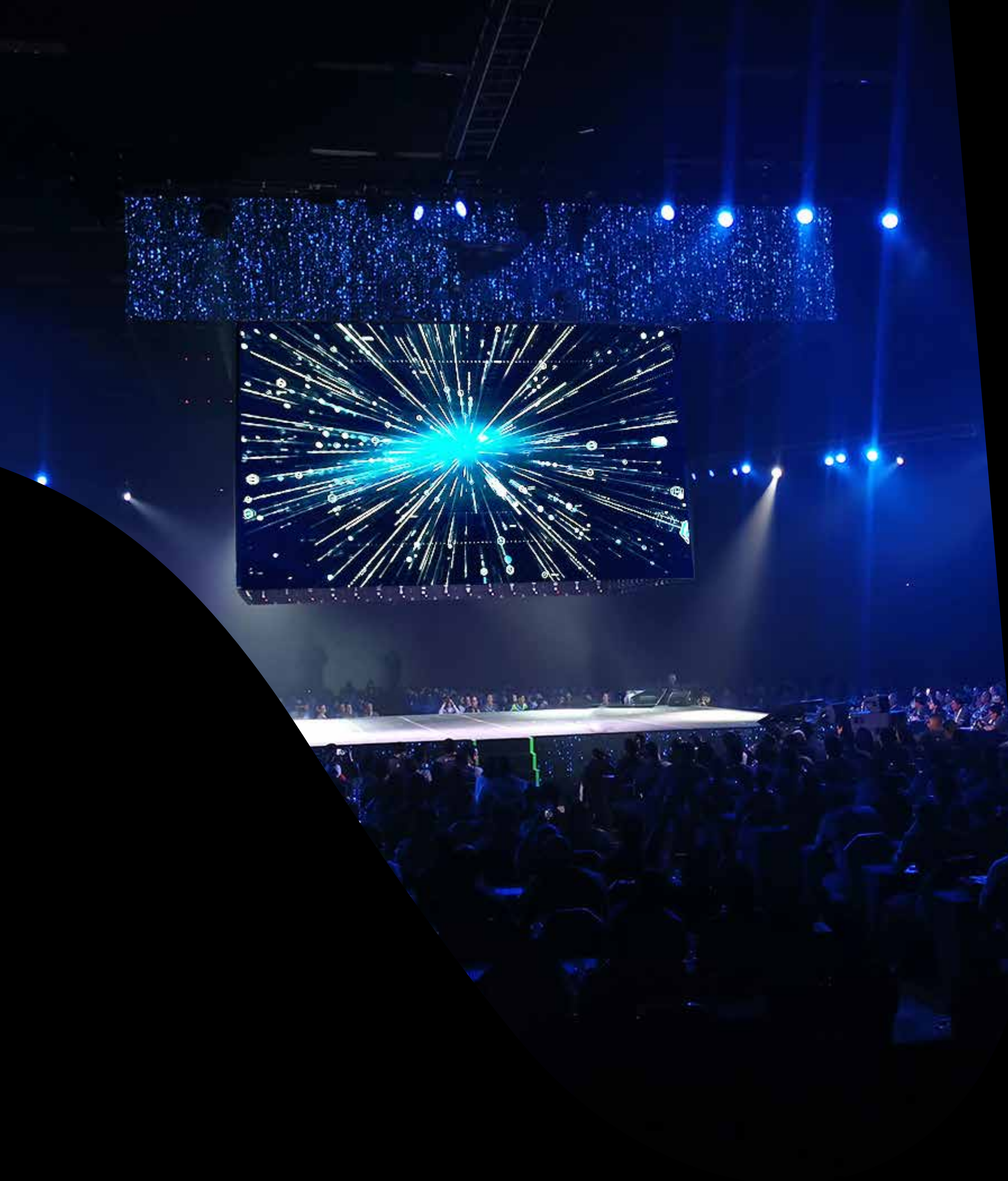
5 CLEAR-COM BP410





RADIAL ENGINEERING JS3

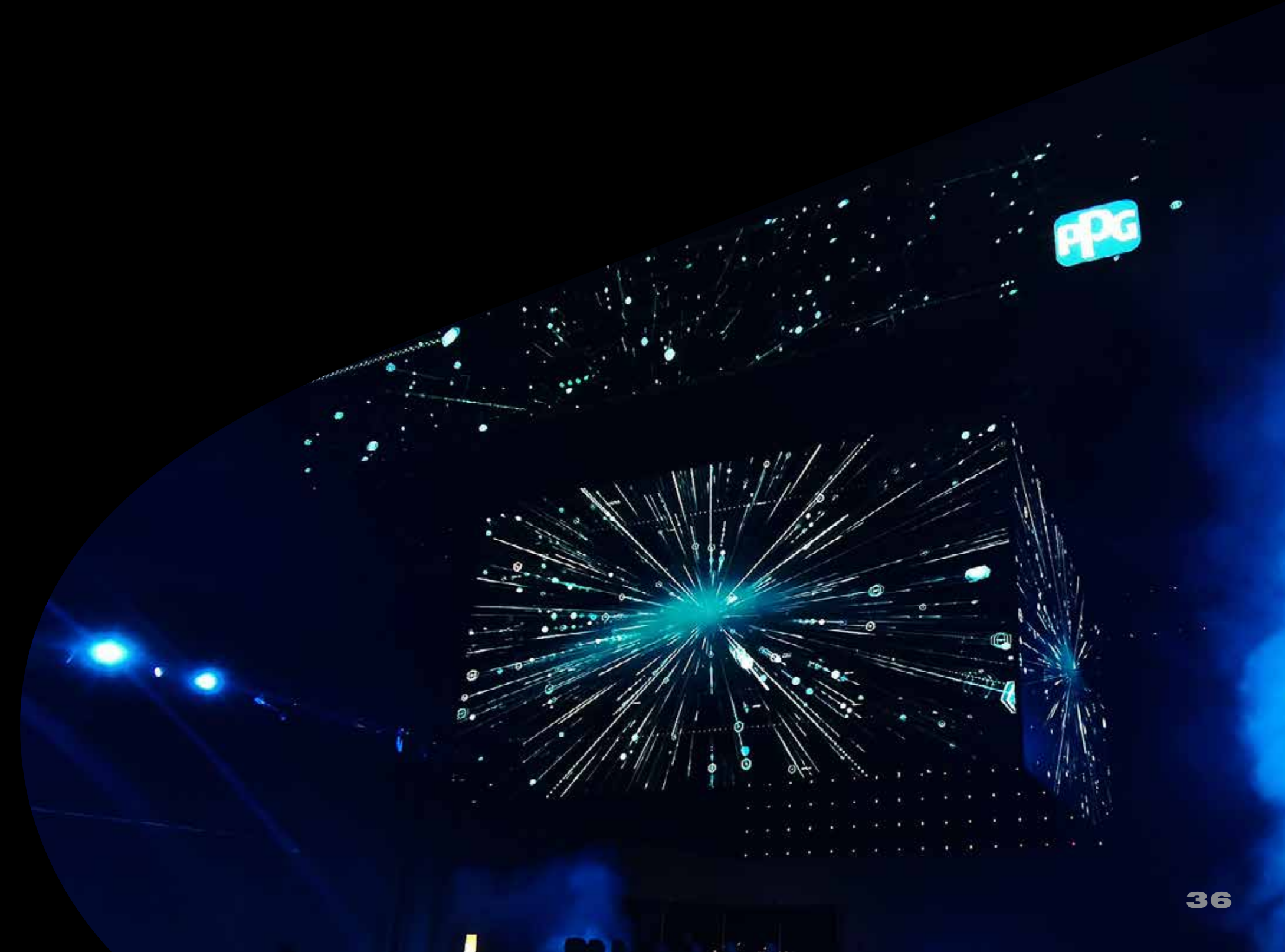
The JS3 is a professional mic splitter designed to split a single source to multiple destinations simultaneously without signal degradation or noise. A premium Jensen transformer inside provides galvanic isolation to eliminate buzz and hum from ground loops, while maintaining an extremely wide bandwidth with ultra-low distortion and phase shift. Ground lifts on the outputs help further reduce noise, while an input pad allows line-level sources to be connected as well.



PAST EVENT

LED PROJECTION

In this event, we implemented large-scale solutions using internal and external speakers.





TRADE SHOW:

- Multimedia network servers were installed to supply a commercial area of 5,000 sq m with 60 55" screens, 16 80" screens and 3 sets of blending with mapping using the 20K lumens Panasonic laser projectors and Watch Out servers.
- We installed a master control room, where all content was managed.
- Product content development and editing and product application techniques of the final user products were distributed to Kiosks along the 5,000 sq m (53,819 sq ft.) area.
- Rigging network with 85 Tomcat light duty truss and a half-ton 65 Stage Maker chain hoist.
- Ambient audio system for 5,000 sq m (53,819 sq ft.)
- 10 workshops with silent audio system (with headphones)
- Fully equipped store with showroom, live product showcase.
- 6 independent video camera systems (I-MAG)





FLUJOS

Incremento de la inversión en I+D+i
Incremento de la inversión en I+D+i
Incremento de la inversión en I+D+i

77% de crecimiento
Vs 2015

Incremento de la inversión en I+D+i
Incremento de la inversión en I+D+i
Incremento de la inversión en I+D+i

POTENCIAL

Incremento de la inversión en I+D+i
Incremento de la inversión en I+D+i
Incremento de la inversión en I+D+i

Incremento de la inversión en I+D+i
Incremento de la inversión en I+D+i
Incremento de la inversión en I+D+i

EFOS 21



GENERAL SESSION

The General Session was truly big and spectacular project in all aspects:

- Rigging network with:
 - 80 Tomcat truss (light duty)
 - 20 Tomcat truss (medium duty)
 - 10 truss Tyler center line.
 - 45 - 1/2 Ton Stage Maker engines.
 - 24- 1 Ton Stage Maker engines.
- D&B Audiotechnik V series audio system with 4 clusters around the stage with 6 boxes each, 16 V-Sub subwoofers, M4 floor monitors, and Yamaha CL5 for FOH.
- For the video, 4K processors, Watch Out, Playback Pro.
- A 360° stage was chosen with a little more than 1,000 tiles of 3.9mm. LED display. Top headband, main screen and bottom headband around the stage were the perfect contour for this stage.
- Instrument System (backline) for live band and wired and wireless microphones.
- For the lighting, we placed 20 Robe Pointe, 30 Clay Paky Sharpy, 4 DTS Pharus, 40 MAC Aura, 160 PAR-LED Color Blender, 20 Ellipsoidal ETC-LED 26° and 36°
- Redundant power supply through diesel generators.

VIDEO





TRUSS FRAME

Enhance visual presentations, Truss-Style Cinefold Dress Kit features a drapery system that creates a memorable theater-like experience. By framing the viewing surface, the rich black velour drapes draw the audience's focus toward the presentation on the screen. Dress kits are especially useful for rear screen presentations. In addition to framing your presentation, the velour curtains hide projection equipment, shield projector light from the audience, and help eliminate ambient light in the projection area.

8.6' x 14.4'





PROJECTOR 6500 LUMENES NEC NP-PA653U

NEC's PA653U is a 6500-lumen LCD laser projector with advanced professional installation features for higher education and corporate users. The newly developed sealed optical engine creates a filter/maintenance free projector. With its multitude of digital inputs, connection to any computer or high definition device is possible. Enjoy design and installation flexibility with a complete line of optional powered lenses (lens shift, focus and zoom), tilt-free and portrait installation capabilities along with built-in edge blending and stacking. The HDBaseT input and separate HDBaseT repeater provide single connections for uncompressed full HD digital video, audio, ethernet power and various control signals.

PROJECTOR LENS NP40ZL

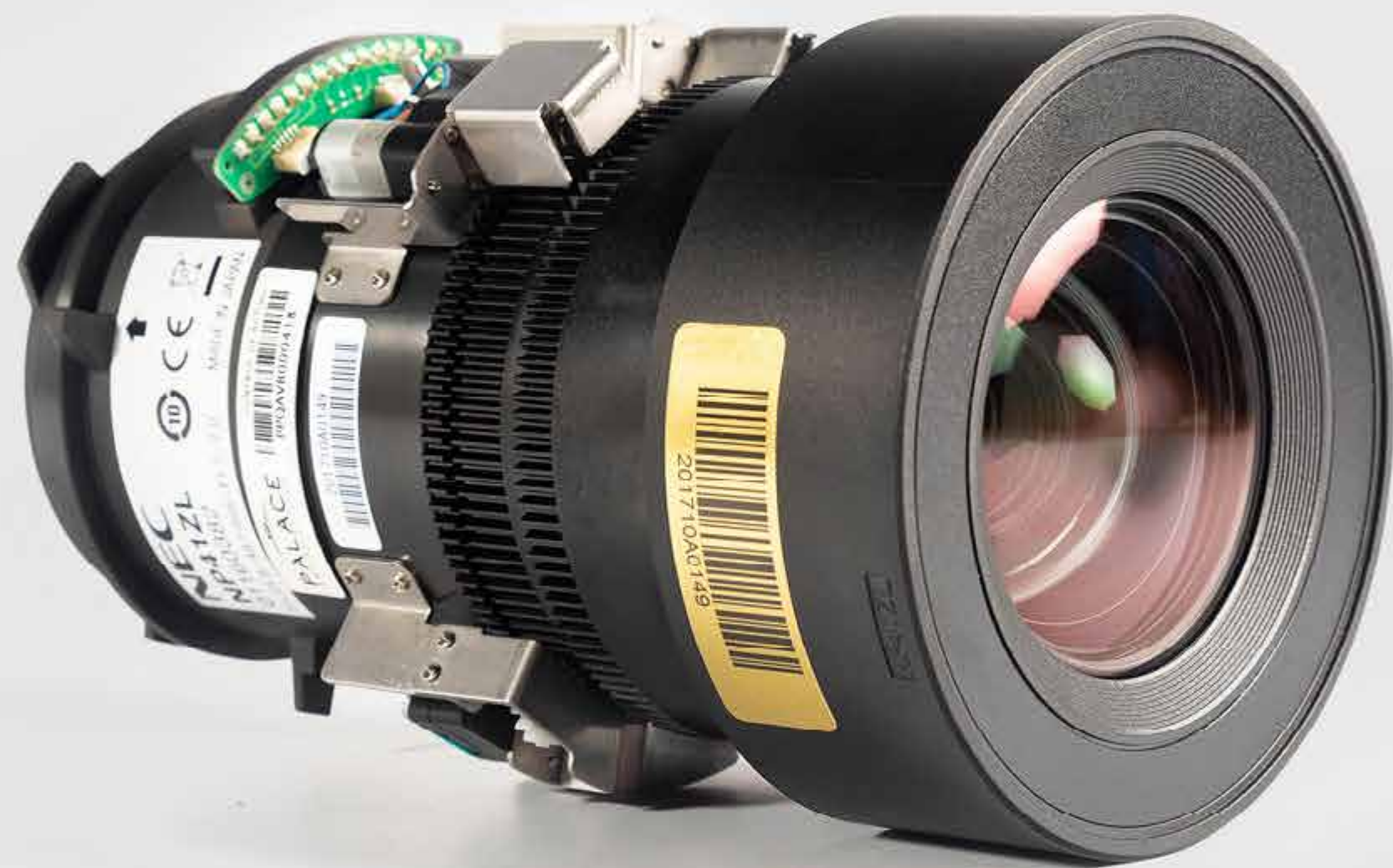
Zoom/Focus motorized.
Zoom Ratio 1.4
Throw Ratio 0.79-1.11: 1
Screen Size 50 - 500 inch.
Weight 1.65Kg.



01:59

01:59





PROJECTOR LENS NP41 ZL

Zoom Ratio 2.3

Throw Ratio 1.30-3.02: 1

Screen Size 50 - 500 inch.

Weight approx. 1.85kg.





NEC C551 - 55" SCREEN

Create beautiful imagery at a cost-conscious price point with the new fully commercial NEC C Series displays. A modern and contemporary design with a mere 45 mm. depth and improved visual aesthetics allow for the smooth and stylish integration of these displays into any environment. These products contain full metal mechanical structures enabling them to be utilized in situations where robustness is a key factor. They also have a wide range of the latest connectivity interfaces including multiple HDMI connections and a built-in media player to allow for many avenues of displaying content.



PALACE
RESORTS

FORO2019
PALACE & ELITE

PALACE
RESORTS

FORO2019
PALACE & ELITE

FORO2019
PALACE & ELITE

FORO2019
PALACE & ELITE



LENOVO THINKPAD E585 LAPTOP

Award-winning series with Intel® Core™ and up to 18 hours of battery life.
High performance.





MACBOOK PRO 13"

Graphics performance not to blink.

The 13" MacBook Pro has a powerful integrated graphics processor with 128MB of DRAM memory, double the previous generation, which speeds up tasks with graphics resources. This way you will have more time to do the most important thing: an incredible job.

IMAC RETINA 5K DE 27"

Retina 5K display. Radeon Pro Vega. 9th generation Intel. Up to 8 cores.
Up to 2TB.





37

37

DSAN PERFECT CUE

A light and sound signaling system that enables a speaker to send cues to a projectionist using a wireless hand-held actuator or to remotely control presentation software via dual programmable USB ports. The extra large arrows makes this model suitable as a down-stage confidence monitor that is connected by wire to a second cue light located at the projection table.





WIRELESS LASER PRESENTER, LOGITECH R400

Wireless Laser Pointer and Presenter, who will be the perfect companion when making important presentations.



PAST EVENT

WORK, PARTY AND MUCH MORE

This agenda included more than 20 events: social, conferences, showrooms, master classes, sports, concerts and more.





- During this event more than 60 specialized technicians and riggers worked to meet all the needs.
- We used 130 Stage Maker motors and hang 147 light duty Tomcat trusses of 10ft.
- 120 Parleds were placed to illuminate al the areas.



Live Concert at The Grand at Moon Palace. Grand and Crystal Ballroom.

- More than 30 rigging points with Tomcat trusses and Stage Maker motors.
- Lighting design for both Ballrooms with Robe Pointe and High End Technospot robotic lamps.
- KLA line array by QSC audio system for 3,000 attendees and a PA located in The Grand Ballroom with a delay system in The Crystal Ballroom for the snacks area were installed.
- Camera system projected in LED screens pitch 5mm (23 x 13ft.) inside Grand ballroom and two projection screens (10 x 18ft.) with Panasonic Laser projectors of 12,000 lumens located in Crystal Ballroom.



WORKSHOPS

- Two LED screens pitch 3.9mm. of 15 x 4m (49 x 3ft).
- Two projection screens of 10 x 18ft. with laser Panasonic projectors of 12,000 lumens.
- Closed Circuit with Sony XDCAMPXQ-X190 HD camera system with Blackmagic switcher.



EXECUTIVE SYMPOSIUM

The event was produced for national and international strategic executives.

- We installed an audio system for the reception of the attendees in the lobby at The Grand.
- Welcome dinner at The Crystal Ballroom: rigging, lightning and QSC line array for 150 attendees with DJ set.



LIGHTING





SHOWCO COLOR BLENDER SH-LED 1808IP

LED

- LEDS power: 18 x 8W (4 in 1)
- Cooling system: convection.
- Light scattering angle: 25°
- Mix color: RGBW.
- LEDS average life: 50,000Hr.

Operation mode.

- DMX512 - 10/7/5/4/3 channels.
- Digital display for DMX channel selection and function selection.
- Color macros.
- Strobe: Variable speed of 1-20 flashes / s.
- Dimmer: 0 - 100%
- Automatic mode.
- Master / slave.

Dimensions: 28.73cm. x 27.00cm. x 16.60cm.

Weight: 5.20Kg.

ETC-S4 LED

Light quality is the driving force behind ETC's LED product development. Countless hours have gone into creating tools worthy of the most professional applications, and the Source Four® LED Series 2 ellipsoidal luminaire is the result of that dedication. With the brightest output and the boldest rendering of the colors you use most, the Source Four LED Series 2 introduces a whole new level of LED ellipsoidal lighting fixtures that can be used anywhere.

ETC-S4 LED 19°

ETC-S4 LED 26°







ROBE POINTE

It can project a static or rotating glass gobo to produce precision in-air and surface images with an even focal plane. Tight or at full 20 degree zoom, the output is crystal clear and brilliant. Add in either rotating, 6 way linear or 8 way circular, prisms to create wide reaching effects across any set. Drop in the frost filter and use any of the 13 rich colors to create a smooth even wash. Pointe has an output far greater in size, quality and power than seems possible from it's small, lightweight body - due to the efficient short arc 280W discharge source and the Robe optical configuration. This new technology fixture even travels efficiently in a case of 4 and will cover all your needs - Beam, Spot, Wash, FX - there is no point in using any other fixture.

SHOWCO BEAM HL-10RHY

Operating Voltage: 100 to 240V. - 50 / 60HZ.

- LCD display.
- DMX512 - 16 channels.
- Electronic ballast.
- 280W 10R Lamp.
- Color temperature: 8500° K.

Optical system

- Linear spotlight with electronic control.
- Dimmer: 0 - 100%
- Strobe: Variable speed 1 - 10 flashes / s.
- Remote on and off of the lamp.
- Light scattering angle: 20°
- Pan 540° and tilt 270° (with automatic position correction)
- PAN / TILT motion resolution: 16 bits.
- Wheel with 15 fixed gobos + white.
- Wheel with 7 bi-directional, indexable and interchangeable rotary gobos.
- Wheel with 14 colors + white + rainbow effect.
- Prism of 2 groups of 16 faces and 3 groups of 24 faces, with bi-directional rotation and variable speed.
- Rainbow effect.

Dimensions: 45.00 m. x 43.00cm. x 53.00cm.

Weight: 16.00Kg.





MA LIGHTING DOT-2 CORE

The MA Lighting DOT-2 Core is the heart of the DOT2 series. It includes a complete programming area, a master play area, 6 fader play buttons and 12 buttons for individual play. With two built-in touchscreens and support for an external touchscreen, is a flexible and compact lighting console that can be used for almost any type of small or medium show with a maximum of 4,096 channels.





100	3
100	3

ALL TT	3	ALL TT	4	ALL TT	5
100	3	50	4	RND	5
1 Cue	Flash	1 Cue	Flash	1 Cue	Flash

122
123
124
125
126
127
128

21
22
23
24
25
26
27
28
29

30
40
50
60
70
80
90
100

26
27
28
29
30

Ch Pg
Ch Pg
Fd Pg
Fd Pg



DMX OPTO SPLITTER HL-0104DMX

Is a versatile 5-pin DMX and RDM optical splitter with robust and durable housing. It has 4 outputs and 1 inputs. To simplify the installation together with the luminaires located, PowerCON power linking is also compatible to make it easier than ever to isolate, amplify and divide a signal. For greater versatility, the unit can be rack-mounted or reliable mounting and admit electrical isolation between inputs and outputs of up to 1000V between ports.



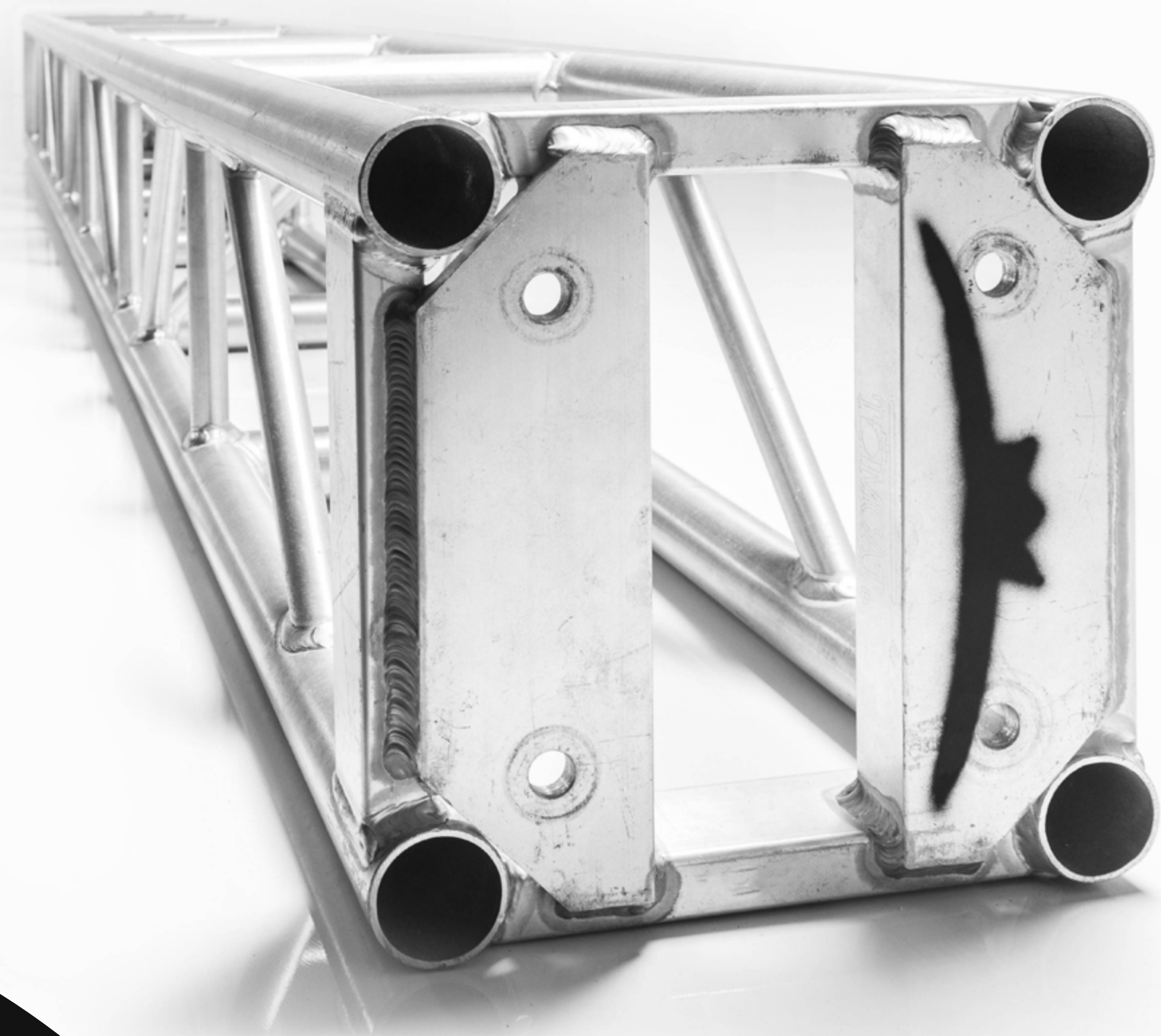


SMOKE FACTORY TOUR - HAZER II

The Tour Hazer in its smallest and simplest version. Ideal for theaters, permanent installations in discotheques, laser tag halls or for mobile DJ's require no touring unit. The canister slot can accommodate a 3ltr. Canister of Tour Hazer fluid which can generate up to 72 hours continuous haze on reduced output.

RIGGING





TOMCAT LD TRUSS 12"X12"

Tomcat truss is renowned for top performance and quality and is compliant with ANSI E1.2-2013 for the best safety assurance. Tomcat manufactures their 12" x 12" truss using only mill-certified materials that are fabricated by AWS certified welders. Their Light Duty 12" x 12" Plated Truss is available in three standard lengths are 10", 5", 3" and a 5-Way Corner Block.

This truss is equipped with bolts for assembly.

Tomcat Truss Light Duty 12" x 12" Plated Truss's main chords are 2"OD x 1/8" aluminum and diagonals are 1"OD x 1/8" aluminum.

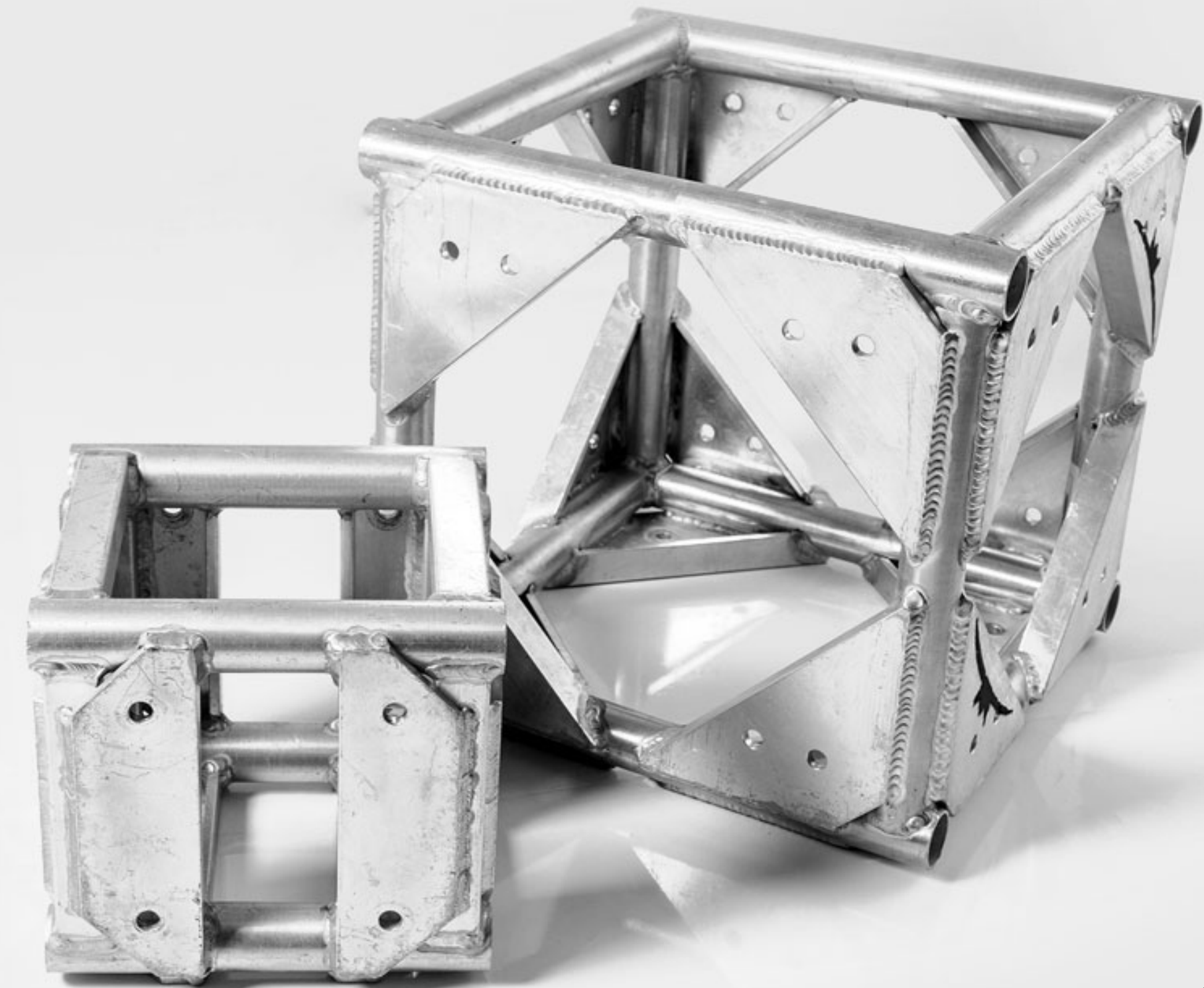
12" x 12" x 10"

12" x 12" x 5"

12" x 12" x 3"

5 - WAY CORNER

20.5" x 20.5" MD





STAGE MAKER SR 10, 1 TON MOTOR

Only electric chain hoist on the market designed directly for entertainment. New load wheel also provides for a smooth and quiet flow of the chain through the hoist. Quiet operation, less than 65 decibels. Maintenance free DC brake - no adjustment needed for the lifetime of the hoist. Limit switch can be adjusted without removing covers. Standard black chain, All pigtail variations available from factory. Hoists meet all VPLT standards (BGV-D8+ and BGV-C1).







MOTION LABS 8 - WAY CONTROL

1 Ton 16 FPM 80' Chain Lift L14-20 Control Cable.

7-Pin Power/Control 3-Phase with low voltage control.

Dimensions: 20" x 13.2" x 7.1"

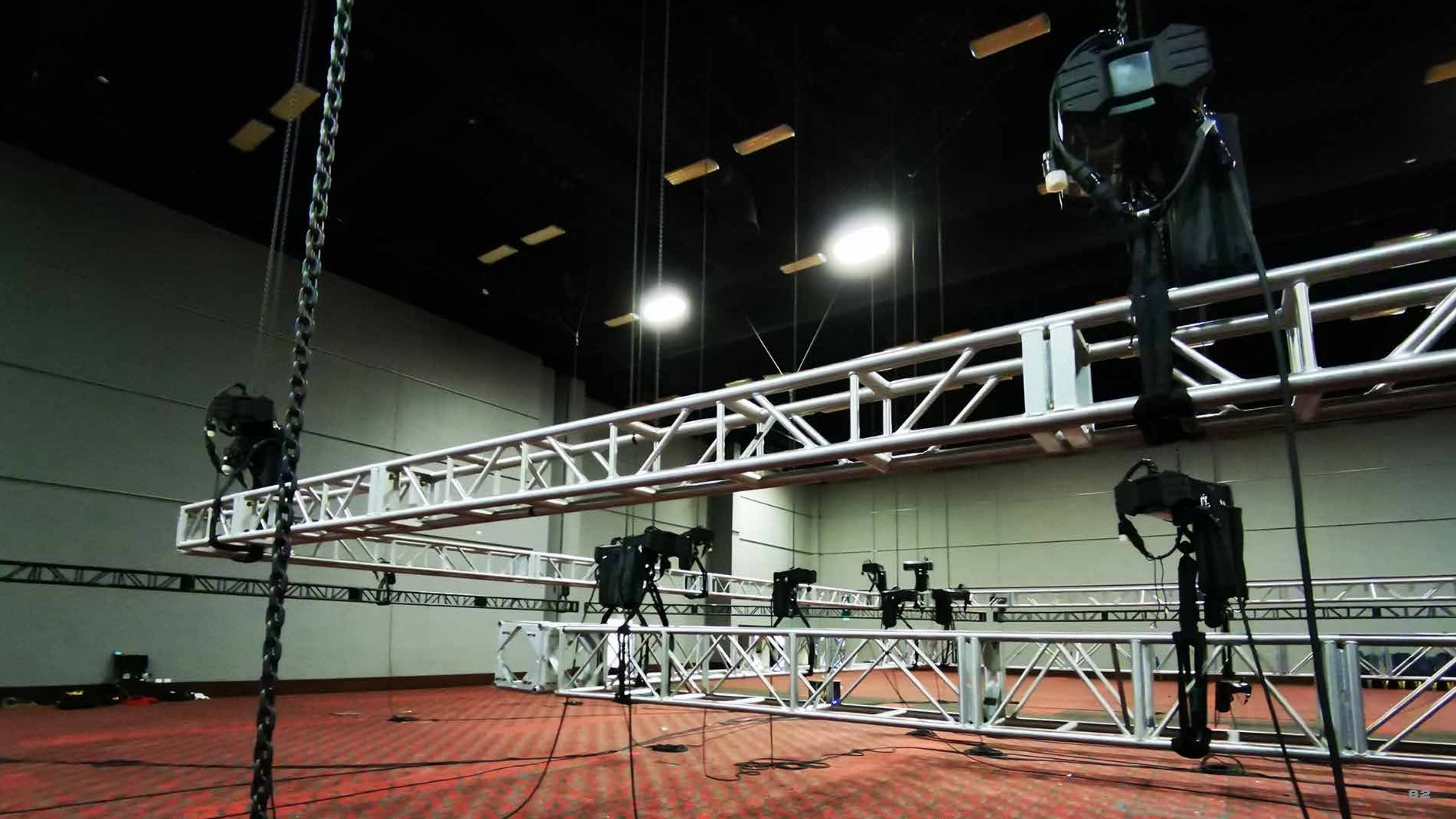
Weight: 98 lbs (without chain). Rubber buffers located on hoist corners provide added protection for the hoist.

New ergonomic concept for the retractable, rubber clad handgrips, allow for easy transportation of the hoist. Lifting hook has an ergonomic, rubber clad, gripping surface. Hoist body is powder coated with black, protective 70µm paint, allowing it to perform under the most extreme conditions. Hoist meets ecology regulations and is RoHS compliant.

MOTION LABS 16 - WAY CONTROL

Motion Laboratories Portable 16 Channel 30 Chain Hoist Control Systems shall be designed to operate up to 16 serially manufactured electric chain hoists. The units shall be part of the 1200-16 series. The unit shall have phase monitoring, where applicable. The unit shall have power indicators for all phases. The unit shall have high visibility ergonomic-grip yellow handheld remote station that features: Quantity 16, 3-position directional switches. Triangular UP/DOWN LED indicators. Illuminated momentary GO switch. Illuminated maintained KILL switch. A 10 foot integrated remote cable. Protective removable Lexan cover.







YELLOW REMOTE EXTENSION P26

Motion Laboratories Portable 16 Channel 30 Chain Hoist Control Systems shall be designed to operate up to 16 serially manufactured electric chain hoists. The units shall be part of the 1200- 16 series. The unit shall have phase monitoring, where applicable. The unit shall have power indicators for all phases. The unit shall have high visibility yellow handheld remote station that features: Quantity 16, 3-position directional switches. Triangular UP/DOWN LED indicators. Illuminated momentary GO switch. Illuminated maintained KILL switch. Two 4 foot integrated remote cables. Protective Handles.

50"

100"

POWER

DISTRIBUTION



MOTION LABS 200 AMPS 1300-200A-12-2-59

Motion Labs modular power distribution systems are designed to provide you with the right size system for the right job. Each system is designed using our library of standard modular panels. With an offering of over 300 panel types to choose from, your distro can be configured for any world voltage.





MOTION LABS 100 AMPS 1300-100A-12-2-03

Motion Labs modular power distribution systems are designed to provide you with the right size system for the right job. Each system is designed using our library of standard modular panels. With an offering of over 300 panel types to choose from, your distro can be configured for any world voltage.

DISTRO L2130. MOTION LABS 1319-04-02-06-001

Motion Labs modular power distribution systems are designed to provide you with the right size system for the right job. Each system is designed using our library of standard modular panels. With an offering of over 300 panel types to choose from, your distro can be configured for any world voltage.





MOON PALACE
CANGUN

NYE
2020

MOON PALACE
CANGUN



MOTION LABS BREAKERED STRINGER BOX

Motion Labs modular power distribution systems are designed to provide you with the right size system for the right job. Each system is designed using our library of standard modular panels. With an offering of over 300 panel types to choose from, your distro can be configured for any world voltage.

WIRE CAMLOCK

Motion Labs power distribution cables are all Extra Hard Usage rated. We establish relationships with quality cable mills to provide the best raw cable used in our assemblies for your product and make sure each cable is properly sized so that the right voltage is getting to your equipment at the end of the line.

2/0 @ 100"

4/0 @ 100"





CABLE L21-30 **CABLE, 100" 50" 25"**

PHMS, M4 X 8mm., Phillips, w/Captive Washer, Steel Black (Stainless) 5 1
B-17-002-0004 Enclosure, Remote Hand Held, Large, 5' Tail, 32 Channel
| SCREW, 8-32 X 3/8" PH W/LW BLACK | Handle, 8-32 Tube, 10" X 1.75",
Yellow, Offset | Face Plate Assembly, Remote, Switch Card, 32 Channel |
Custom Label, Printable, B435/ Silver, TLS, 1.5" X .5", Y93431, 500pc.

100"

50"

25"





AUDIO VISUAL ACCESSORIES



DA-LITE DESIGNER FLIPCHART

Whether you are in an office or educational institution, the folding Da-Lite 37128 Designer Easel will serve you well. The contemporary design is sleek and thin.





ACRYLIC PODIUM

BLACK PIPE & DRAPE VELOUR PANEL

Inherently flame retardant velour, approximately 15 oz. / sq yd. This fabric is used in high quality curtain and piping systems and sand curtains. Sewn with a 4.0 in tube pocket, this fabric is perfect for trade show booths, covering feasible walls, opaque material for studios and theaters, audio visual rental and much more. Quantity 1 = 1 finished curtain. Each curtain has stitched hems on the sides and a 5.9 piping pocket on the top. Passes NFPA 701 FR standards, and certified with the California State Fire Marshal Great adsorption of light and sound. Care instructions: machine wash as cold colors, use a gentle cycle. If necessary, use only a mild liquid detergent applied to the water before placing the crown in the machine, never put the concentrated detergent directly in contact with the fabric, as this can alter the color. Can be machine dried (air setting only), and ironed (cool setting).

Panel 12ft. x 22ft.





GOOD TO KNOW

The images in this catalog are for illustrative purposes only.

Item descriptions are for informational purposes only.

Additional fees apply.

Please contact your Palace Productions Sales Executive to receive a quote.

Prices are in USD, including tax.

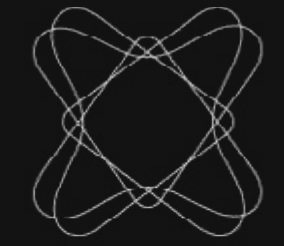
Prices may vary without previous notice.

Equipment is subject to availability.




PALACE
MEETINGS AND INCENTIVES


MOON PALACE®
JAMAICA


QUANTUM
EVENTS TECHNOLOGY

THANK YOU